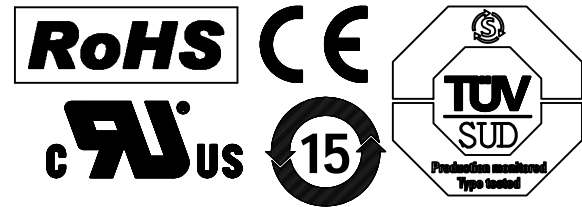
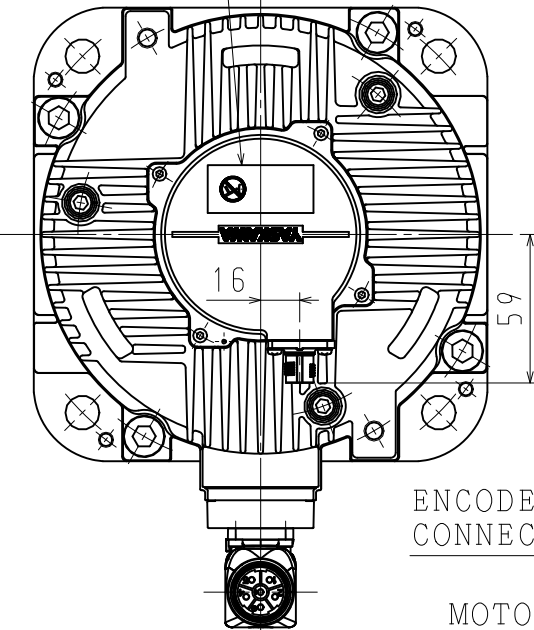


DWG. NO. 900-191-782



NAME PLATE HOLDING BRAKE

ENCODER



ENCODER CONNECTOR

MOTOR CONNECTOR

NAME PLATE

φ79

197

NAME PLATE

A

Fr

φ35+0.01
0

0.04 A

φ0.04 A

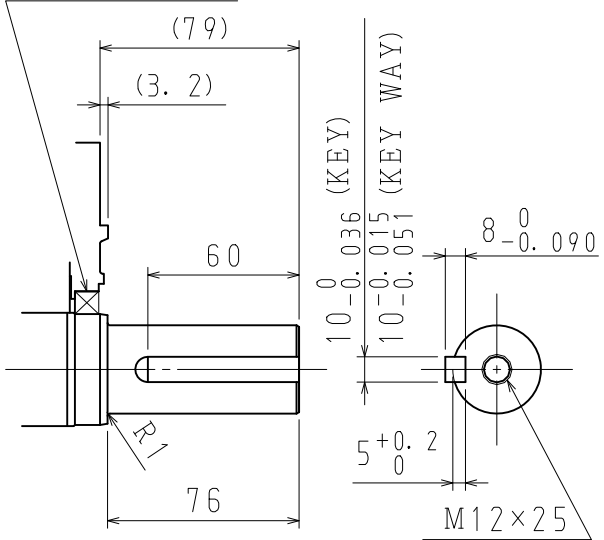
NAME PLATE

0.02

4×φ13.5

HOLDING BRAKE SPECIFICATIONS			
MOMENT OF INERTIA GD ² /4 (kg·m ²)	HOLDING TORQUE (N·m)	RATED VOLTAGE	CAPACITY (W)
8.5×10 ⁻⁴	43.1	DC24V 0~+10%	18.5

DUST SEAL



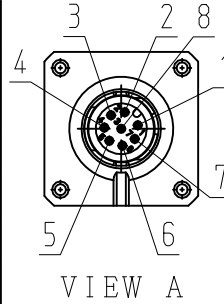
DETAIL OF SHAFT EXTENSION

NOTES.

1. ALL DIMENSIONS ARE IN MILLIMETERS.
2. MOTOR SPECIFICATIONS : 900-177-305
3. ENCODER SPECIFICATIONS: 900-193-533 (24BIT INCREMENTAL)
4. HOLDING BRAKE CANNOT BE USED TO STOP MOTOR.
5. VIBRATION : 15μm OR BELOW AT RATED SPEED.
6. PLUGS AND CABLE CLAMPS ARE OPTIONAL.
7. READ AND UNDERSTAND DOCUMENT PACKED WITH MOTOR (SAFETY PRECAUTIONS), AND BE CAREFUL USING MOTOR.
8. DEGREES OF PROTECTION: IP67 EXCEPT FOR SHAFT OPENING. MUST USE SPECIFIED CONNECTORS FOR MOTOR.
9. DO NOT TOUCH EACH OF CONNECTOR PINS DIRECTLY. IT CAUSE FAILURE.
10. IN CASE OF MOUNTING THIS MOTOR HORIZONTAL, TO PLACE THE CONNECTOR DOWN IS RECOMMENDABLE.
11. USE HEXAGON SOCKET HEAD CAP SCREWS FOR MOUNTING MOTOR.
12. MOTOR CONNECTOR COULD BE TURNED IN THE RANGE OF ☆ WITHIN 10 TIMES.

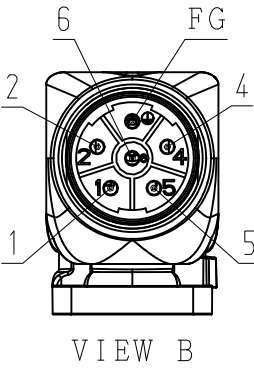
ENCODER TERMINAL CONNECTION

1	PG5V
2	PG0V
3	FRAME GROUND
4	-
5	-
6	DATA (+)
7	DATA (-)
8	-
CON. CASE	FRAME GROUND

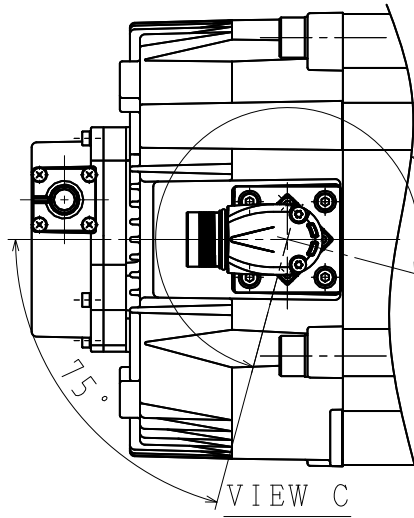


MOTOR TERMINAL CONNECTION

1	PHASE V
2	BRAKE
4	BRAKE
5	PHASE U
6	PHASE W
FG	FRAME GROUND
CON. CASE	FRAME GROUND



RECEPTACLE SIZE:M23
HOUSING:SF-5EP1N8AAD00S
MAKER:PHOENIX CONTACT



TYPE	RATED OUTPUT kW	RATED TORQUE N·m	TIME RATING	RATED SPEED min ⁻¹	VOLTAGE V _{rms}	RATED CURRENT A _{rms}	THERMAL CLASS	WEIGHT kg	ALLOWABLE RADIAL LOAD F _r N	ALLOWABLE THRUST LOAD F _s N
SGM7G-30DFR6H	2.9	18.6	CONT.	1500	400 (3PHASE)	15.7	F	20.0	1470 (AT SHAFT END)	490

RECEPTACLE SIZE:M12
HOUSING:SACC-MSQ-M12MS-25-3, 2 SCO
MAKER:PHOENIX CONTACT

1	2	3	4	5	6	7	8
1	2	3	4	5	6	7	8
1	2	3	4	5	6	7	8
1	2	3	4	5	6	7	8

YASKAWA

DRWN.	M MURAKI
CHKD.	T. HIROSE
APRV.	K. AOKI

TITLE AC SERVOMOTOR Σ-7 SERIES
SGM7G MODEL 2.9kW

DRWN. DATE	Oct. 26 '16	REV.	1
DWG. NO.	900-191-782		

SIZE A3